



# Confession

for double bass

Brien Henderson



© 2017 Brian Henderson (ASCAP)

All Rights Reserved

ISMN 979-0-800133-00-8

This work was commissioned by Megan McDevitt in 2016. She premiered the piece on February 10, 2017 in Ann Arbor, MI.

Brian Henderson

Confession for double bass

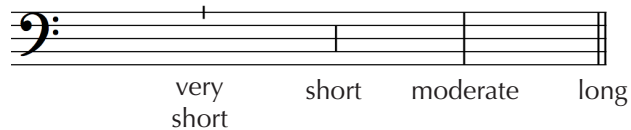
Duration: 10 minutes

Catalog ID: 16NK

# Notes to the performer

## Bar lines

Bar lines indicate pauses of varying lengths. All bar lines of the same type should be approximately, not precisely, the same length of time. This is preferred over the use of rests to allow for your own tastes in this matter of length of pause. These pauses articulate important phrase divisions. What constitutes a “moderate” or “long” pause is up to your taste.



## Articulation

Tenuto marks primarily indicate an agogic accent, but you can give these a slightly weightier attack if desired. Wedge accents are to be treated conventionally.

## Fermati

Notes with a fermata over them are not phrase divisions. Rather, they operate as a sort of extreme tenuto. They can be held as long as you like, keeping in mind that they should remain within the continuous flow of the phrase.

## Feathered beams

These indicate speeding up and slowing down in an undetermined tempo. The number and sequence of notes should be honored, and the entire sequence should flow smoothly within the phrase, but the degree of acceleration is up to your taste. Shorter feathered gestures are more like accelerating grace-note figures.

dedicated to Megan McDevitt

# Confession

for double bass

Brien Henderson

Austere, flowing, fragile ♩ = 64

1 *flautando*

*pp*

*p*

*p*

*p*

*pp*

*pp*

*rit.....*

Confession

Forceful, noisy, scratchy  $\text{♩} = 60$   
gradually calming

Meditative  $\text{♩} = 50$

*fff*  $\text{f}$   $\text{mf}$   $\text{mp}$   $\text{p}$   $\text{pp}$

*mf*  $\text{mp}$   $\text{f}$   $\text{mp}$   $\text{pp}$

Austere, a little slower  
*sul tasto*

*mf*  $\text{mp}$   $\text{f}$   $\text{p}$  rit.....

Revelatory  $\text{♩} = 60$

*ord.*

*mf*  $\text{mp}$

$\text{p}$   $\text{mf}$   $\text{p}$

$\text{♩} = 64$

rit....

Leggero  $\text{♩} = 56$

$\text{p}$   $\text{mf}$   $\text{mp}$

*più mosso*

$\text{p}$   $\text{mf}$

*meno mosso*

rit.....

$\text{mp sub.}$   $\text{f}$   $\text{mp}$

Gentle (♩ = 56)

Musical staff with notes and dynamics *p* and *mf*.

(stay gentle)

Confident, a little faster

Musical staff with notes and dynamics *mp*, *p*, *pp*, and *mf*.

Musical staff with notes and dynamics *mp*, *f*, and *ff*.

**molto accel.....** sub. ♩ = 60

Musical staff with notes and dynamics *fff*, *mp*, and *pp*.

Volatile

Musical staff with notes and dynamics *p* and *mf*.

Gentle as in the beginning

Musical staff with notes and dynamics *ff*, *mp*, *pp*, and *p*.

Confident, a little faster

**molto accel.....**

Musical staff with notes and dynamics *mp* and *p*.

sub. ♩ = 60

First staff of music with dynamic markings: *f*, *mp*, *f*, *ff*, *mp*. The music features a series of eighth and sixteenth notes with various slurs and accents.

smooth, flowing

Second staff of music with dynamic markings: *mp*, *p*. The music consists of a continuous stream of eighth notes with a long slur across the entire staff.

Third staff of music with dynamic markings: *pp*, *ppp*. The music features a mix of eighth and sixteenth notes with slurs.

Meditative ♩ = 50

Fourth staff of music with dynamic markings: *ppp*, *pp*, *p*, *mp*, *mp*. The music is characterized by a slower tempo and includes dotted notes and slurs.

Revelatory

Fifth staff of music with dynamic markings: *mf*, *mf*. The music features a 13/8 time signature and includes slurs and accents.

Gentle

Sixth staff of music with dynamic markings: *p*, *pp*. The music is in 13/8 time and features a mix of eighth and sixteenth notes with slurs.

Austere, as in the beginning

rit.....

Seventh staff of music with dynamic marking: *pp*. The music is in 13/8 time and concludes with a ritardando marking and a final note.